



Tanks

2023 - 2024



**Reverse
Osmosis**



Pressure



Hydropneumatic



Brine

[Click here to
see Price List](#)

H₂O International Inc.

3001 S.W. 15th St., Suite C, Deerfield Beach, FL 33442

USA Toll-Free: 1-800-570-3464

International: 1-954-570-3464

sales@h2ofilter.com

www.h2ofilter.com

Tanks

Table Of Contents



Tanks

- 1. RO Series – Reverse Osmosis Tanks**
- 2. AT Series – Pressure Tanks**
- 3. ARO Series – Hydropneumatic Pressurized Tanks**
- 4. BT Series– Brine Tanks**

PRESSURIZED TANKS

RO SERIES

STORAGE TANKS



This tank is tested and certified by NSF International against ANSI / NSF Standard 58 for material requirements only.

COMPONENT

AQT™ Storage Tanks are NSF approved under Standard 58 and CE approved under the PED (Pressure Equipment Directive). Through these approvals our tanks carry the appropriate markings and can be used anywhere in the world.

AQT™ Storage Tanks have Stainless Steel connections to prevent lead contamination. Its high grade butyl diaphragm and polypropylene liner are made with materials approved by the FDA to ensure water of the highest quality.

TANK SPECIFICATIONS

- | | | | |
|--------------------------|-----------------|--------------|----------------------|
| • Max. Working Temp: | 104° F (40° C) | • Diaphragm: | High Grade Butyl |
| • Max. Working Pressure: | 100 psi (7 bar) | • Liner: | Virgin Polypropylene |
| • Preloaded Air: | 7 psi (0.5 bar) | | |

FEATURES

- | | |
|---|--|
| • Base Included | • Certified to NSF/ANSI Standard 58 |
| • 304 Stainless Steel Connections | • High Grade, Heavy Duty Butyl Diaphragm |
| • Pre-Charged Tanks | • Material Approved by FDA |
| • Triple Coated High Grade Baked Enamel | • Side Stainless Steel Air Connector |





RO SERIES

STORAGE TANKS

* The volume above is total capacity, not water storage volume.

RO SERIES - SPECIFICATIONS											
PART NUMBER	DESCRIPTION	CONNECTION	COLOR	DIAMETER		HEIGHT (With Base)		VOLUME		WEIGHT (Shipping Box)	
				in	cm	in	cm	gal	L	lbs	kgs
RO-0.5-W14	0.5 Gallon Tank	1/4" NPT	White	5.5	14	7.9	20	0.5	3	2.5	1.1
RO-2.0-W14	2.0 Gallon Tank	1/4" NPT	White	8	20.3	11.5	29.2	2	8	4.8	2.2
RO-3.2-W14	3.2 Gallon Tank	1/4" NPT	White	9	22.9	13.7	34.8	3.2	12	6.8	3.1
RO-4.5-W14	4.5 Gallon Tank	1/4" NPT	White	11	28	13.8	35.1	4.5	18	8	3.6
RO-4.5-B14	4.5 Gallon Tank	1/4" NPT	Blue	11	28	13.8	35.1	4.5	18	8	3.6
RO-4.5-BLK14	4.5 Gallon Tank	1/4" NPT	Black	11	28	13.8	35.1	4.5	18	8	3.6
RO-6.0-W14	6.0 Gallon Tank	1/4" NPT	White	11.4	29	15.7	40	6	24	10.2	4.6
RO-9.2-W14	9.2 Gallon Tank	1/4" NPT	White	11.4	29	21.7	55	9.2	40	14.8	6.7
RO-14-B14	14 Gallon Tank	1/4" NPT	Blue	15.3	39	22.4	56.4	14	60	23.7	10.8
RO-14-B34	14 Gallon Tank	3/4" NPT	Blue	15.3	39	22.4	56.4	14	60	23.7	10.8
RO-14-W14	14 Gallon Tank	1/4" NPT	White	15.3	39	22.4	56.4	14	60	23.7	10.8
RO-14-W34	14 Gallon Tank	3/4" NPT	White	15.3	39	22.4	56.4	14	60	23.7	10.8
RO-20-B34	20 Gallon Tank	3/4" NPT	Blue	15.3	39	31	78.8	20	80	27.8	12.6
RO-20-W34	20 Gallon Tank	3/4" NPT	White	15.3	39	31	78.8	20	80	27.8	12.6
RO-28-W10	28 Gallon Tank	1" NPT	White	16.9	43	30.1	76.5	28	100	34.1	15.5
RO-44-W114	44 Gallon Tank	1 1/4" NPT	White	21.7	55	36.4	92.5	44	160	59	26.8



- 304 Stainless Steel Water Connection
- Water Chamber
- High Grade Heavy Duty Butyl Diaphragm
- FDA Grade Polypropylene Liner
- Triple Coated High Grade Baked Enamel



Base Included



Distributed by: H₂O International Inc.



3001 S.W. 15th Street, Suite C, Deerfield Beach, FL 33442

sales@h2ofilter.com • www.h2ofilter.com

Toll-Free Number: 1-800-570-3464

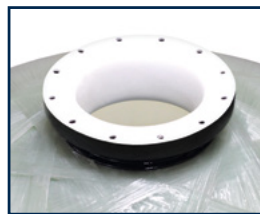
International: 1-954-570-3464

Manufactured by Hydronix Water Technology



AT SERIES

PRESSURE TANKS



Operating Parameters:	
Maximum Operating Pressure:	150 psi (10.5 bar)
Maximum Operating Temperature:	120 °F (49 °C)

Warranty:	
10 Year Warranty for:	6" - 13" vessels
5 Year Warranty for:	14" - 63" vessels

* For complete installation and handling instructions, please visit:
https://aquatroltech.com/dl/manuals/AT_Tanks_Manual.pdf

DESIGN PARAMETERS

- Cycle Test
- Safety Factor

SAFETY FACTORS

- 100,000 Cycle Test without leaks
- Safety Factor
4:1 (Minimum burst at 600 psi)



Certified to
 NSF/ANSI Standard 61 for
 materials requirements only.

COMPONENT

Distributed by: **H₂O International Inc.**



3001 S.W. 15th Street, Suite C, Deerfield Beach, FL 33442
 sales@h2ofilter.com • www.h2ofilter.com

Toll-Free Number: 1-800-570-3464

International: 1-954-570-3464

Manufactured by Hydronix Water Technology

Size	Part Number	SIZE (DIAMETER X HEIGHT)		CHARACTERISTICS		TOTAL VOLUME		CAPACITY (MEDIA) [†]
		Inches	Millimeters	Connection	Color	Gallons	Liters	Ft ³
6"	AT-0618BL-25T	6 x 18	152 x 457	2.5" T	Blue	1.8	6.8	0.30
	AT-0713BL-25T	7 x 13	177 x 330	2.5" T	Blue	1.9	7.2	0.15
7"	AT-0713BK-25T	7 x 13	177 x 330	2.5" T	Black	1.9	7.2	0.15
	AT-0717BK-25T	7 x 17	177 x 431	2.5" T	Black	2.5	9.5	0.30
	AT-0717BL-25T	7 x 17	177 x 431	2.5" T	Blue	2.5	9.5	0.30
	AT-0735BL-25T	7 x 35	177 x 889	2.5" T	Blue	5.2	19.7	0.50
	AT-0744BL-25T	7 x 44	177 x 1117	2.5" T	Blue	6.4	24.2	0.60
	AT-0817BL-25T	8 x 17	203 x 431	2.5" T	Blue	2.9	11.0	0.33
8"	AT-0835BL-25T	8 x 35	203 x 889	2.5" T	Blue	6.6	25.0	0.55
	AT-0844BL-25T	8 x 44	203 x 1117	2.5" T	Blue	8.7	32.9	0.75
	AT-0844BK-25T	8 x 44	203 x 1117	2.5" T	Black	8.7	32.9	0.75
9"	AT-0935BL-25T	9 x 35	228 x 889	2.5" T	Blue	8.3	31.4	0.80
	AT-0948BL-25T	9 x 48	228 x 1219	2.5" T	Blue	12.7	48.1	1.00
	AT-0948BK-25T	9 x 48	228 x 1219	2.5" T	Black	12.7	48.1	1.00
10"	AT-1017BL-25T	10 x 17	254 x 431	2.5" T	Blue	4.4	16.7	0.50
	AT-1017BK-25T	10 x 17	254 x 431	2.5" T	Black	4.4	16.7	0.50
	AT-1035BK-25T	10 x 35	254 x 889	2.5" T	Black	10.2	38.6	0.75
	AT-1035BL-25T	10 x 35	254 x 889	2.5" T	Blue	10.2	38.6	0.75
	AT-1044BL-25T	10 x 44	254 x 1117	2.5" T	Blue	13.1	49.6	1.00
	AT-1054BK-25T	10 x 54	254 x 1371	2.5" T	Black	16.4	62.1	1.50
	AT-1054BL-25T	10 x 54	254 x 1371	2.5" T	Blue	16.4	62.1	1.50
12"	AT-1248BL-25T	12 x 48	304 x 1219	2.5" T	Blue	21.0	79.5	1.60
	AT-1252BL-25T	12 x 52	304 x 1320	2.5" T	Blue	22.2	84.0	1.75
	AT-1252BK-25T	12 x 52	304 x 1320	2.5" T	Black	22.2	84.0	1.75
	AT-1265BL-25T	12 x 65	304 x 1651	2.5" T	Blue	28.0	106.0	1.85
13"	AT-1354BL-25T	13 x 54	330 x 1371	2.5" T	Blue	27.5	104.1	2.00
	AT-1354BK-25T	13 x 54	330 x 1371	2.5" T	Black	27.5	104.1	2.00
14"	AT-1465BL-25T	14 x 65	355 x 1651	2.5" T	Blue	40.6	153.7	3.00
	AT-1465BK-25T	14 x 65	355 x 1651	2.5" T	Black	40.6	153.7	3.00
	AT-1465BL-4T	14 x 65	355 x 1651	4" T	Blue	40.6	153.7	3.00
16"	AT-1665BL-25T	16 x 65	406 x 1651	2.5" T	Blue	49.0	185.5	4.00
	AT-1665BK-25T	16 x 65	406 x 1651	2.5" T	Black	49.0	185.5	4.00
	AT-1665BL-4T	16 x 65	406 x 1651	4" T	Blue	49.0	185.5	4.00
	AT-1665NA-4T4B	16 x 65	406 x 1651	4" T 4" B	Natural	49.0	185.5	4.00
18"	AT-1865NA-4T	18 x 65	457 x 1651	4" T	Natural	66.7	252.5	5.00
	AT-1865NA-4T4B	18 x 65	457 x 1651	4" T 4" B	Natural	66.7	252.5	5.00
21"	AT-2162NA-4T	21 x 62	533 x 1574	4" T	Natural	88.0	333.1	7.00
	AT-2162NA-4T4B	21 x 62	533 x 1574	4" T 4" B	Natural	88.0	333.1	7.00
24"	AT-2472NA-4T	24 x 72	609 x 1828	4" T	Natural	126.8	479.9	10.00
	AT-2472NA-4T4B	24 x 72	609 x 1828	4" T 4" B	Natural	126.8	479.9	10.00
30"	AT-3072NA-4T	30 x 72	762 x 1828	4" T	Natural	195.5	740.0	15.00
	AT-3072NA-4T4B	30 x 72	762 x 1828	4" T 4" B	Natural	195.5	740.0	15.00
36"	AT-3672NA-4T	36 x 72	914 x 1828	4" T	Natural	283.0	1071.2	20.00
	AT-3672NA-4T4B	36 x 72	914 x 1828	4" T 4" B	Natural	283.0	1071.2	20.00
	AT-3672NA-6T6B	36 x 72	914 x 1828	6" T 6" B	Natural	283.0	1071.2	20.00
	AT-3694NA-6T6B	36 x 94	914 x 2388	6" T 6" B	Natural	318.0	1203.6	30.00
42"	AT-4272NA-6T6B	42 x 72	1066 x 1828	6" T 6" B	Natural	290.6	1099.9	30.00
48"	AT-4872NA-6T6B	48 x 72	1219 x 1828	6" T 6" B	Natural	477.7	1808.1	40.00
	AT-4894NA-6T6B	48 x 94	1219 x 2387	6" T 6" B	Natural	657.1	2487.1	40.00
60"	AT-6094NA-6T6B	60 x 94	1524 x 2387	6" T 6" B	Natural	710.2	2688.1	60.00
	AT-60110NA-6T6B	60 x 110	1524 x 2794	6" T 6" B	Natural	896.2	3392.1	75.00
63"	AT-6370NA-6T6B	63 x 70	1600 x 1778	6" T 6" B	Natural	687.0	2600.3	60.00
	AT-6383NA-6T6B	63 x 83	1600 x 2108	6" T 6" B	Natural	832.3	3150.3	70.00

† The listed resin volume are nominal values and are subject to change based on user preference and experience.




LIT-AT-DS 08/06/20

Distributed by: H₂O International Inc.



3001 S.W. 15th Street, Suite C, Deerfield Beach, FL 33442
 sales@h2ofilter.com • www.h2ofilter.com
Toll-Free Number: 1-800-570-3464
International: 1-954-570-3464

Manufactured by Hydronix Water Technology

Colors Options: BK - Black 
 NA - Natural 
 BL - Blue 

PRESSURIZED TANKS



ARO SERIES

HYDROPNEUMATIC PRESSURIZED TANK



AQT™ Hydropneumatic Pressurized Tanks are an ideal product for well applications and for applications where you want to minimize pump start-ups every time you use water. When the pump fills the tank with water, the air above the diaphragm is compressed and the increased pressure inside the tank causes the pump to shut-off. Minimized pump starts and stops prevent motor damage due to excessive cycling of the pump, creates more consistent water pressure and provides savings through reduced energy use.

AQT™ Hydropneumatic Pressurized Tanks are constructed using high strength cold rolled carbon steel for added strength and painted with triple grade enamel making them extremely durable in outdoor applications. The tanks come with stainless steel 304 NPT connections, offer a heavy-duty butyl rubber diaphragm and provide you with the peace of mind of an FDA grade polypropylene liner. This coupled with its 5-year warranty and durable design makes them the logical choice for industry professionals because of their cost to benefit ratio.

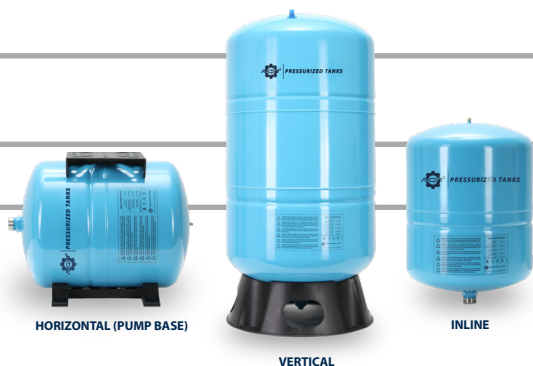


NITROGEN CHARGE ADVANTAGES

- ✓ LITTLE TO ZERO AIR REFILL
- ✓ NO PRESSURE CHANGES DUE TO TEMPERATURE CHANGES
- ✓ NITROGEN MIGRATION THROUGH DIAPHRAGM LESS LIKELY THAN OXYGEN
- ✓ FEWER PUMP START-UPS = ENERGY SAVINGS + EXTENDED PUMP LIFE

ARO SERIES

HYDROPNEUMATIC PRESSURIZED TANK



INLINE MODELS											
Model Number	Tank Volume		Maximum Acceptance		Tank Diameter		Tank Height		Tank Connection (NPT)	Tank Weight	
	(gal)	(L)	(gal)	(L)	(in)	(cm)	(in)	(cm)		(lbs)	(kg)
ARO-305I-B10	0.5	3	0.25	0.95	5.1"	13	8.5"	21.5	1"	2.6	1.2
ARO-82I-B10	2	8	0.9	3.4	8"	20.3	11.4"	29	1"	5.5	2.3
ARO-1232I-B10	3.2	12	1.6	6.05	9.1"	23	15.4"	39	1"	7.5	3.2
ARO-1845I-B10	4.5	18	2.5	9.5	11"	28	15.4"	39	1"	8.5	3.7
ARO-246I-B10	6	24	3	11.4	11.6"	29.5	16.3"	41.5	1"	10.6	4.8
ARO-3810I-B10	10	38	5.2	19.7	11.6"	29.5	21.7"	55	1"	15	6.8

HORIZONTAL MODELS (PUMP BASE MODELS)													
Model Number	Tank Volume		Maximum Acceptance		Tank Diameter		Tank Height		Tank Length		Tank Connection (NPT)	Tank Weight	
	(gal)	(L)	(gal)	(L)	(in)	(cm)	(in)	(cm)	(in)	(cm)		(lbs)	(kg)
ARO-1845H-B10	4.5	18	2.5	9.5	11"	28	12"	30	15.4"	39	1"	10	4.4
ARO-246H-B10	6	24	3	11.4	11.6"	29.5	12.6"	32	16.3"	41.5	1"	12	5.4
ARO-3810H-B10	10	38	5.2	19.7	11.6"	29.5	12.6"	32	21.7"	55	1"	16.5	7.4
ARO-5814H-B10	14	58	11.3	42.8	15"	38.1	17"	42.5	22"	53	1"	24.5	11.1
ARO-8020H-B10	20	80	13	49.2	15"	38.1	17"	42.5	30"	73	1"	32.5	14.7

VERTICAL MODELS											
Model Number	Tank Volume		Maximum Acceptance		Tank Diameter		Tank Height		Tank Connection (NPT)	Tank Weight	
	(gal)	(L)	(gal)	(L)	(in)	(cm)	(in)	(cm)		(lbs)	(kg)
ARO-5814V-B10	14	58	11.3	42.8	15"	38.1	23.6"	66	1"	24.5	11
ARO-8020V-B10	20	80	13	49.2	15"	38.1	30.7"	78	1"	32.5	14.6
ARO-10025V-B10	25	100	15	56.8	15"	38.1	39.2"	99.5	1"	40.5	18.4
ARO-12032V-B10	32	120	16	60	15"	38.1	44"	112	1"	50	22.7
ARO-13034V-B114	34	130	22.5	85	22"	55.9	29.5"	75	1 1/4"	54	24.5
ARO-16044V-B114	44	160	30	113.6	22"	55.9	36"	91.5	1 1/4"	61.5	27.8
ARO-23562V-B114	62	235	35.2	133	22"	55.9	45.7"	116	1 1/4"	83	37.7
ARO-30582V-B114	82	305	44	166.5	22"	55.9	57.1"	145	1 1/4"	104	47.1
ARO-450120V-B114	120	450	46.8	177.1	25.6"	65	55.2"	140	1 1/4"	135.6	61.5

TANK SPECIFICATIONS

- FACTORY PRE-CHARGE: 30 psi (2 bar)
- MAX. WORKING TEMP: 200 °F (93 °C)
- MAX. WORKING PRESSURE: 150 psi (10 bar)

MATERIALS OF CONSTRUCTION

- SHELL: Cold Rolled Carbon Steel
- COATING: Triple Grade Enamel
- LINER: FDA GRADE Polypropylene
- DIAPHRAGM: Heavy-Duty Butyl Rubber
- CONNECTIONS: 304 Stainless Steel

WARRANTY

MANUFACTURER WARRANTY: 5 year Limited Warranty

WARNINGS

WARNING: BEFORE INSTALLATION, READ CAREFULLY THE PRODUCT INSTALLATION AND OPERATION INSTRUCTIONS MANUAL. FAILURE TO FOLLOW THE INSTRUCTIONS MAY RESULT IN SERIOUS OR FATAL INJURY AND/OR PROPERTY DAMAGE. FAILURE TO FOLLOW THE INSTRUCTIONS WILL VOID THE PRODUCT WARRANTY.

WARNING: EXPLOSION HAZARD! FAILURE TO FOLLOW THE INSTRUCTIONS IN THE PRODUCT MANUAL CAN CAUSE A RUPTURE OR EXPLOSION, POSSIBLY CAUSING FATAL OR SERIOUS INJURY, LEAKING, FLOODING AND/OR PROPERTY DAMAGE.

WARNING: THIS STORAGE TANK IS DESIGNED FOR OPERATION IN COLD WELL SYSTEMS AND LIMITED TO A WORKING PRESSURE OF NO GREATER THEN 125PSI. INSPECT TANK REGULARLY. IF SIGNS OF CORROSION ARE PRESENT, REMOVE TANK FROM OPERATION IMMEDIATELY.

AQT™ will not be held responsible for damage deriving from improper use of the Hydropneumatic Pressurized Tanks.



Distributed by: H₂O International Inc.



3001 S.W. 15th Street, Suite C, Deerfield Beach, FL 33442
 sales@h2ofilter.com • www.h2ofilter.com
Toll-Free Number: 1-800-570-3464
International: 1-954-570-3464

Manufactured by Hydronix Water Technology



BT SERIES

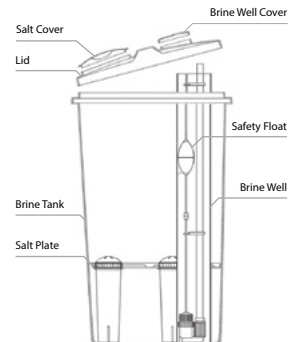
BRINE TANKS

AQUATROL BT SERIES BRINE TANKS

Aquatrol BT Series Brine Tanks are durable tanks made to provide you with years of service. With their 1/4" thick tank wall* Aquatrol BT Series Brine Tanks will not bulge or crack easily and offer true heavy duty performance.

Aquatrol BT Series Brine tanks are molded from durable polyethylene and are chemical resistant. All tanks come with a heavy duty salt plate, brine well, cap and come standard with safety float and air check valve.

Aquatrol BT Series Brine Tanks can be used in residential, commercial and industrial applications making them an attractive product of choice for industry professionals everywhere.



Part Number	Description	Tank Volume	
		gal	L
BT-1633-100S	Aquatrol 1633, 100L brine tank complete, Black, Square	26.4	100
BT-1833-100	Aquatrol 1833, 100L brine tank complete, Black, Round	26.4	100
BT-1840-145	Aquatrol 1840, 145L brine tank complete, Black, Round	38.3	145
BT-2450-350	Aquatrol 350L brine tank complete, White	92.4	350
BT-3050-500	Aquatrol 500L brine tank complete, White	132.1	500
BT-3948-1000	Aquatrol 1000L brine tank complete	264.1	1000
BT-4260-1500	Aquatrol 1500L brine tank complete	396.2	1500
BT-5060-2000	Aquatrol 2000L brine tank complete	528.3	2000

* Model BT-2450 -350 and larger.



BT-1633-100S



BT-1840-145



BT-2450-350

Distributed by: [H₂O International Inc.](http://www.h2ofilter.com)



3001 S.W. 15th Street, Suite C, Deerfield Beach, FL 33442
 sales@h2ofilter.com • www.h2ofilter.com
Toll-Free Number: 1-800-570-3464
International: 1-954-570-3464